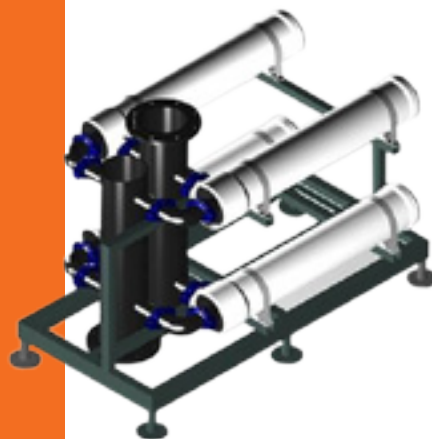


Rizonflow® FRP Filter Housing

With the design of single cartridge installation, Rizonflow® FRP Filter Housing perfectly matches with the Realmax® RMHM high flow filter cartridge. Independent unit configuration can be applied according to the site conditions or it provides free combination with reverse osmosis system which permits effective use of space. Due to the strong anti-corrosion performance, high-strength FRP filter housing has absolute advantages in the desalination field. Each filter housing's capacity is up to 10-50T/h. It allows infinite combination. Digital Control winding process provides high internal surface finish and easy cleaning, preventing the growth of bacteria.



Features & Benefits

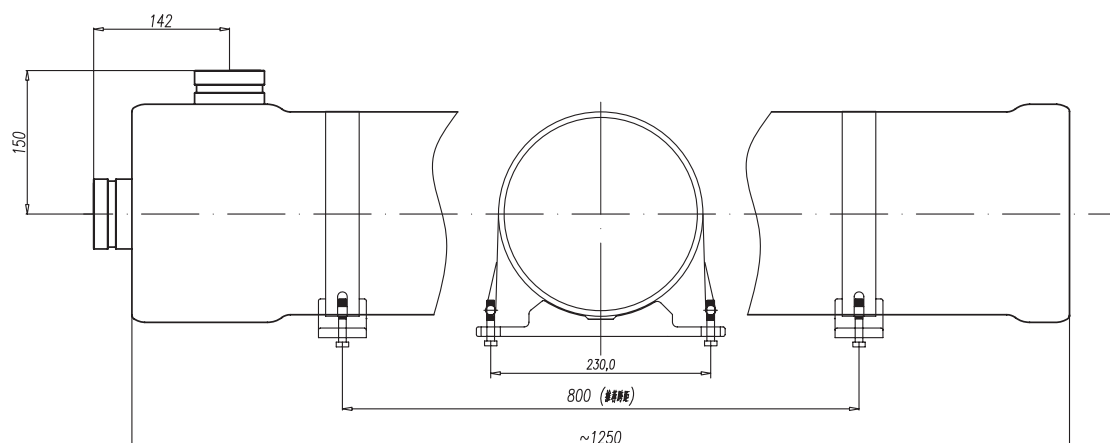
- Structure of permutation and combination allows free use of space
- Modular design allows free design according to different flow rate
- Modular design provides easy combination and disassembly
- Quick and humanized design for easy open of end cap and filter cartridge change out
- Quicker for changing filter cartridge without dismounting pipeline
- Bright and clean Internal surface, easy cleaning
- High strength of corrosion resistance is a new choice of desalination project

Applications

- Sea Water Desalination
- Pre-filtration and terminal filtration for NF、UF、RO、EDI system, etc.
- UF、RO backflushing and cleaning filtration
- Manufacture and household wastewater treatment, Water recycling pre-treatment, pre-filtration
- Pre-filtration and terminal filtration of Electronic, microelectronic and semiconductive industrial high purity water
- Oilfield reinjection water, boiler feed water, chemical reagent, Liquid organic products, high purity chemicals, pesticide, etc.
- Purified water for drinking, mineral water, fruit juice, healthy drinks



Engineering Drawing



Specification

Model	GRP-Mem
Pressure	0.6Mpa(6.0bar)
Maximum temperature	82° C
Filtration media	Water
Filter housing material	FRP
Housing diameter	230mm
Housing inlet/outlet material	UPVC
Housing connector size	DN65(73mm)
Housing connector type	Connection side of couplings
Applicable filter cartridge for system	Realmax® RMHM filter cartridge

Recommended common combination

Solution Type	Apparatus flow (Max)	Element quantity	Dimension of inlet/outlet	Installing Form
GRP-Mem×1	50	1	DN50	Vertical/Horizontal
GRP-Mem×2	100	2	DN100	Vertical/Horizontal
GRP-Mem×3	150	3	DN150	Vertical/Horizontal
GRP-Mem×4	200	4	DN200	Vertical/Horizontal
GRP-Mem×5	250	5	DN200	Vertical/Horizontal
GRP-Mem×6	300	6	DN250	Vertical/Horizontal

Note: Our company can provide filter housing combination system solution according to the site conditions to facilitate customizing Fiber Reinforced Plastics filtration system.